



## WELCOME TO BARACK DE VINCK

---



### Authentic guesthouse for 4 people (slow living)

- ✓ Life anno 1919
- ✓ In the heart of nature
- ✓ Rest and time for each other
- ✓ Everything you need provided
- ✓ Modern comfort if desired
- ✓ Private parking

In this overview, you can find a lot of useful and practical information about your stay.

Barak de Vinck is an alternative guesthouse with a special story. With us, you get rid of all the luxury and live to the rhythm of nature. Just like 100 years ago.

Far away from the hustle and bustle and all modern comforts, you experience the essence: you unwind and make time for each other.

### Reviews ★★★★★

"Young and old alike immediately felt at home there."

"Unique and super comfortable trip to the past. Quiet location with fantastic views of the countryside. We would love to come back."

"Clean, beautiful, tidy and very quietly located. Definitely recommended."

### Contact

[info@barakdevinck.be](mailto:info@barakdevinck.be)

057 46 84 46

0474 77 19 52

→ Please feel free to refer to **the map of the guesthouse (see [Appendix 1](#))** to get a good orientation while reading this overview.

**Bedrooms** - All beds are made on arrival.

Bedroom 1: double bed

Bedroom 2: 2 single beds, which you can slide next to each other

**Toilet** is outside, with the most amazing view. Operates as a dry toilet. Toilet paper is provided.

**Water pump** with cistern water. Usable for washing and cooking. **Drinking water** is also provided in glass bottles.

**Large garden** with wonderful views and various spots to discover or enjoy. Access to the herb garden, hedge and orchard. **Playground** (± 1 ha) for romping, running and climbing trees.

**Terrace** with picnic bench. Deck chairs and hammocks for relaxing. **Campfire pit** with fire bowl and BBQ grill (wood included).

**Ample parking** in front of the guesthouse, accessible via a private road.

The **living area** with old-fashioned stove (ESSE) for heating and cooking (cooker + oven). Large, round table with 4 chairs. Cosy sitting area fully furnished in 1919. There are board games and card games for hours of gaming fun. Books and sources to delve into the rich history of the 'Baron of Bellewaerde'. You will also find **tourist information** about the region, with various walking and cycling maps (via junctions). The guesthouse is right on the Westhoek Tourist Office's walking and cycling network.

The **kitchen** is fully equipped with pots, pans and cutlery. Sufficient household items (= eggs, flour, butter, corn, sugar, coffee beans and milk) provided.

→ Refer to the **comprehensive kitchen inventory for** more info (**see [annex 2](#)**).

There is a **basic kit** for several days (= sponge + washing-up liquid + kitchen rags + towels + hand soap + rubbish bags). There is also plenty of **chaste material** (= sweeping brushes + dustpan and brush + squeegee + mop + buckets + brown soap). We ask that you leave the house **swept clean**. Cleaning service is included after departure.

Survived 1919? Then you have doubly earned your **certificate!**

**Modern area** accessible via emergency door. Equipped with **every luxury**: a modern kitchen with induction hob + oven + fridge + microwave... And also a bathroom with walk-in shower and toilet, a seating area with smart TV (HDMI connection with cable) and (not forgetting) WIFI. Here you will also find the button to activate the WIFI in the barracks, and the hidden plugs. In short, here you are in the modern world of the 21st century. If not included in the rent, opening the door will cost you 100 euros extra.

Safety above all- The house is inspected according to the latest **fire safety** measures. There are smoke detectors, CO2- detectors, fire detection system and fire extinguishers.

The property is also fully coronaproof according to Tourism Flanders measures. Everything is thoroughly disinfected between guests. For these reasons, please **do not arrive earlier than 4pm**. We really need all the time between the different guests. Please **leave no later than 10am (Monday- Friday) and 8pm (Sunday)**.

The price includes **everything** (made beds, set of bath towels per person, kitchen linen, consumption, tourist tax and normal final cleaning). The deposit will be returned to your account one week after your stay, if everything is in order.

Barak de Vinck is located along a beautiful lane 600 metres from the public road, in the middle of the historic WWI site of Bellewaerde. Baron de Vinck of the castle estate near Hooge had a rural cottage there that the British christened "Wee Cottage" on their trench maps. More than 100 years later, the rebuilt makeshift house is an oasis of tranquillity in the middle of a green and wooded area that invites walking, cycling and even horse riding.

→ Want to book a private guide for a cycling or walking tour about the rich history of the region? Be sure to check out **Bellewaerts'** website: [www.bellewaerts.be](http://www.bellewaerts.be)

TIP: Cycle network "Ypres Salient"- passage at the guesthouse (node 56)

→ There is a **nice walk** that starts at the guesthouse (**see Annex 3**).

TIP: Ypres Arch Walking Network- passage at the guesthouse (node 73)

→ **More tourism tips** at [www.toerismeieper.be](http://www.toerismeieper.be) or [www.toerismewesthoek.be](http://www.toerismewesthoek.be)

→ Info and various brochures available in Barak de Vinck.

→ **Public transport to Ypres:** bus line 84 stops every hour at the 'Bellewaerde' stop 300m from the guesthouse.

We ourselves own **Hooge Crater museum**, at the beginning of the cul-de-sac that goes up to "Barak de Vinck".

You can visit this unique private museum about the 1<sup>st</sup> world war **at a group rate** as tenants of this guesthouse.

The museum is located at the beginning of Bellewaardestraat, in the old Hooge church, and right opposite Hooge Crater Cemetery, which with its 6,000 graves is the 4<sup>e</sup> largest in Europe. The war museum houses the collection of owner Niek Benoot and of Philippe Oosterlinck, a passionate collector of WWI war material. Besides the realistic reconstructions of war scenes, the collection of weapons, uniforms and historical photographs stand out. A must for the interested tourist, and for those looking for a historical perspective.

Are you visiting with the (grand)children? Children go independently through the museum with the Hooge Boys' family trail.



Using a fill-in sheet and a floor plan, they pass through various places in the museum, where- via videos by the Hooge Boys- they discover knew-you-things about World War I and are given assignments. The information boards are at children's height and contain simple words. It is an interactive and playful trail with fun assignments. A museum visit on a child's scale!

→ Visit Hooge Crater museum: [www.hoogecrater.com](http://www.hoogecrater.com)

### Theme café

Housed in the old Hooge school, this cosy theme café is located next to the museum. You can marvel at Belgium's largest collection of 'TRENCH ART' (trench art).

Definitely not to be missed is the extensive menu of delicious WESTHOEK beers. You could, for instance, try the 'Wipers Times' on tap. A delicious blonde beer from the last and only Ypres city brewery. Also available are delicious croques, salads and breughel plates to satisfy hungry stomachs.

→ The theme café is also an info point, where you can ask all your questions about tourism, hiking and cycling ...

→ Open every day from 10am to 6pm, and on Sundays from 10am to 9pm.

Closed on Mondays and Tuesdays. [www.hoogecrater.com/thema-cafe](http://www.hoogecrater.com/thema-cafe)

See you at 't Hooge!!!

Fun for big and small can be found with our neighbours.

→ Bellewaerde park: [www.bellewaerde.be](http://www.bellewaerde.be)

→ Bellewaerde aqua park: [www.bellewaerde.be/aquapark](http://www.bellewaerde.be/aquapark)

## Breakfast

→ A bakery that delivers to your home (at the desired hour) and where you can order online:  
[www.bakkerijcocerulle.be](http://www.bakkerijcocerulle.be) (+ €2.50 per delivery)

→ Another good bakery offering home delivery (from €35): [www.versavelieper.be](http://www.versavelieper.be)

## Lunch- dinner

→ Tapas boards, full breakfasts, buffets?

Contact **Guillaume from Beaufort Catering**: [www.beaufortcatering.be](http://www.beaufortcatering.be)

→ Indulge in tasty meals and/or a full breakfast delivered to your home?

Then contact **Traiteur Bruno**: [www.traiteurbruno.be](http://www.traiteurbruno.be)

→ Tasty BBQ with a chef at home?

Then contact **Patrick Noppe**: [www.bbg-patrick.be](http://www.bbg-patrick.be)

→ Fries delivered to your home?

Then contact **T'lepers frietje**: [www.tiepersfrietje.be](http://www.tiepersfrietje.be)

Be sure to check and follow our facebook page for more news, photos and cool posts.

Thanks for visiting and sharing our facebook page!



Comments from our customers, and any improvements we would love to hear! You can always email these after your stay to [info@barakdevinck.be](mailto:info@barakdevinck.be), or you can come visit us in person at Hooge Crater museum, at the beginning of the road. It is always nice to read a review from you on our facebook page, or give your stars on our Google page.

If you have any questions, problems, or comments, we are ready to help you. We are sure you will have a great stay. Therefore, a final but important tip: **enjoy the Westhoek and each other!**

Many greetings,

**Ilse & Niek**

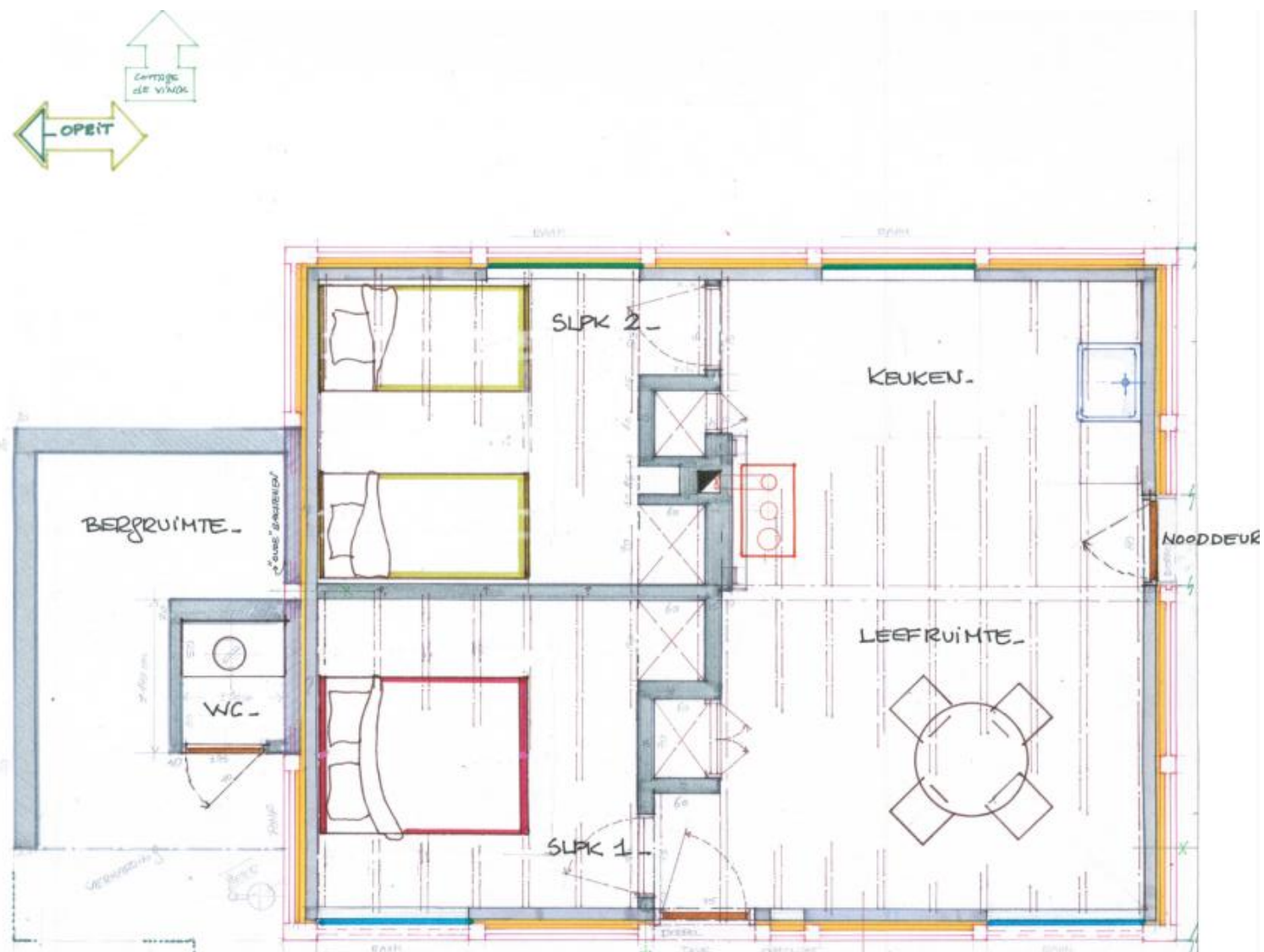
**Louis & Arthur**







## Annex 1





## Annex 2

---

### In the barrack

- ✓ beater
- ✓ ladle
- ✓ sauce ladle
- ✓ cake creator
- ✓ all kinds and sufficient cutlery
- ✓ bowls and serving plates
- ✓ cake holders
- ✓ sufficient water glasses
- ✓ shot glasses
- ✓ coffee bags with matching saucers
- ✓ milk jug
- ✓ sufficient champagne and wine glasses
- ✓ sufficient plates (small- large- deep)
- ✓ frying pan
- ✓ scale
- ✓ measuring cup
- ✓ (cupcake) moulds (different sizes)
- ✓ coasters
- ✓ coffee grinder
- ✓ corkscrew
- ✓ kitchen apron
- ✓ cutting boards

- ✓ enough frying pans (different sizes)
- ✓ mincer
- ✓ spatulas
- ✓ foam spade
- ✓ ladle
- ✓ colander
- ✓ manual mixer
- ✓ rolling pin
- ✓ iron
- ✓ bowls
- ✓ cups
- ✓ funnel

### In the modern section

- ✓ coffee
- ✓ Kettle
- ✓ Microwave
- ✓ Thermos
- ✓ frying pans
- ✓ corkscrew
- ✓ garlic press
- ✓ can opener
- ✓ scissors
- ✓ peeler
- ✓ oyster knife
- ✓ grater
- ✓ extra crockery and cutlery





## Frontwandeling op de Ieperboog in Zillebeke

De Ieperboog moest koste wat kost verdedigd worden. Hier en daar konden de Duitsers wel degelijk stukjes van de heuvelkam innemen, zoals aan Bellewaarde Ridge. Vandaag verkennen we een deeltje van het front waar vier jaar lang een zinloze oorlog werd uitgevochten. We stappen door dichte bossen, langs prachtige panoramapunten en bezoeken het warmste museum van het land.

TEKST **MARIJN FOLLEBOUT**

Hoewel sommige Duitse diplomaten er alles aan deden om een oorlog te vermijden, lag na het fatale schot van Gavrilo Princip op aartshertog Frans Ferdinand de weg naar een wereldwijd conflict open. Duitsland koos voor de aanval als verdediging. Het was nooit de bedoeling dat de soldaten vier jaar lang in de loopgraven zouden doorbrengen. Het front sneed dwars door 't Hooze, een gehucht van Zillebeke.

Elke bezoeker wordt in Museum Hooze Crater (1) gastvrij ontvangen. Met levensgrote decors, persoonlijke verhalen van soldaten en heel wat foto's en memorabilia krijgt de oorlog op 't Hooze iets tastbaars. Er loopt ook een extra expo over de medische evacuatie aan het front. Knooppunt 73 bevindt zich aan de overkant, op de rechterhoek van de Britse begraafplaats.

### 73 -> 74 VREEMDE POTTEN

Met tienduizenden marcheerden de Duitse soldaten tussen 1915 en 1917 op de Meenseweg hun nachtmerrie tegemoet. Ter hoogte van het attractiepark Bellewaerde gaan we rechtsaf. Deze vallei is genoemd naar de Bellewaardebeek. Landbouwers ploegen hier nog regelmatig oorlogstuig boven en metaaldetectoren komen er wat graag hun hobby beoefenen.

### DE BARON VAN 'T HOOGE

VZW Bellewaerts organiseert begeleide wandel- en fiets-tochten op 't Hooze in Zillebeke. Ook groepen kunnen een vertelwandeling boeken, zoals die over Gaston de Vinck. De kasteelheer van 't Hooze was een van de eerste bewoners die na de oorlog terugkeerde om de Verwoeste Gewesten herop te bouwen.

[www.bellewaerts.be](http://www.bellewaerts.be)



### PRAKTISCH

- Afstand: 10,6 km
- Parking: Langs de kant van de weg ter hoogte van Hooze Crater Museum, Meenseweg 467, Zillebeke (Ieper) – parkeer-schijf leggen (max. 3 uur).
- Bus: Lijn 84 stopt om het uur aan de halte Zillebeke - Bellewaerde
- Wandelnetwerk Ieperboog
- Niet geschikt voor rolstoel of kindervan

Enkel de hoofddreef van het Hoozebos (2) is vrij toegankelijk. Ook hier zien we de rode metalen hekken rond de jonge olmen die de stellingen van de Duitsers aangeven. De blauwe hekken geven de geallieerde stellingen aan. De vreemde potten in de bomen zijn bedoeld om vleermuizen te huisvesten. Het pad kruipt langzaam naar omhoog.

### 74 -> 40 -> 37 KASTEELDOMEIN

De afsluiting van sommige weiden is recuperatie-materiaal uit de oorlog. Bij het terug afdalen van de heuvelkam gaan we links het Landgoed Godtschalck (3) in. Tot eind 19de eeuw was dit een kasteeldomein. Na de verwoestingen van de Eerste Wereldoorlog werd het heringericht als bos. Sommige parkbomen hebben de oorlog overleefd, zoals de majestueuze beuk die midden op het pad staat. De lus door het bos zit vol verrassingen, zoals de open plek met poel aan de rand van het bos of het verlopen boshuisje midden in het bos. Een vriendelijk koppel schrikt zich een hoedje als we gegeneerd en met rode wangen voorzichtig een begroeting mompelen.

### 37 -> 41 -> 39 -> 42 -> 43 -> 45 -> 46 -> 71 ICONISCH UITKIJKPUNT

Aan de rand van het Groenenbergbos steekt nog een Duitse bunker deels boven de grond. We stappen langs een weide en draaien dan voorbij de vroegere herberg Het Pappotje linksaf naar Hill 62 (4). Er lopen een tiental Britten rond op het memoriaal. Het uitzicht op Ieper is prachtig. De torens zijn perfect te onderscheiden.

### 71 -> 72 -> RECHTDOOR NAAR 73 TUNNELERS VERSUS MINEURS

We dwarsen opnieuw de brede vallei van de Bellewaardebeek om dan voorbij de Meenseweg heuvelopwaarts richting Bellewaarde Ridge (5) te stappen. De Cross of Sacrifice staat op het hoogste punt van de heuvel. Twee jaar lang werd hier zowel boven- als ondergronds een dodelijk kat-en-muis spel gespeeld. Nu eens waren de Britse 'tunnelers' aan de winnende hand, dan weer de Duitse 'mineurs'. Het pad brengt ons langs de bosrand terug naar Museum Hooze Crater waar een Bernardus van 't vat wacht. ■